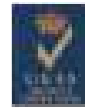




MPol-250A/300A

Metallographic Auto Grinder Polisher





MPoli-250A/300A Product Feature

Product Feature

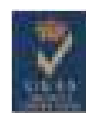
- Single-chip microcomputer control, ABS material body.
- Stepless speed control, support rotational direction.
- The grinding head with single force pressure and central force pressure
- Both auto and manual grinding and polishing processes.
- 7 inch colorful touch screen, easy operation, intuitive data display
- Time and speed can be set, automatically controlled watering system,
- Special self-adaptive design grinding disc makes the sample and grinding disc fit perfectly, which effectively solve the multi-faceted phenomenon and ensures consistency of grinding surface.
- Automatic locking function of grinding head,
- Magnetic grinding disc supports for fast disc replacing. Teflon painted wheel holder makes no residue of changing abrasive paper and polishing cloth.
- DC brushless motor with long service life and low noise brings strong power
- It can store ten procedures, set different parameters for different samples.
- Semi-rotating grinding disc and inner lighting system, easy to take and place the samples.



MPoli-1-250A/300A Single Disc

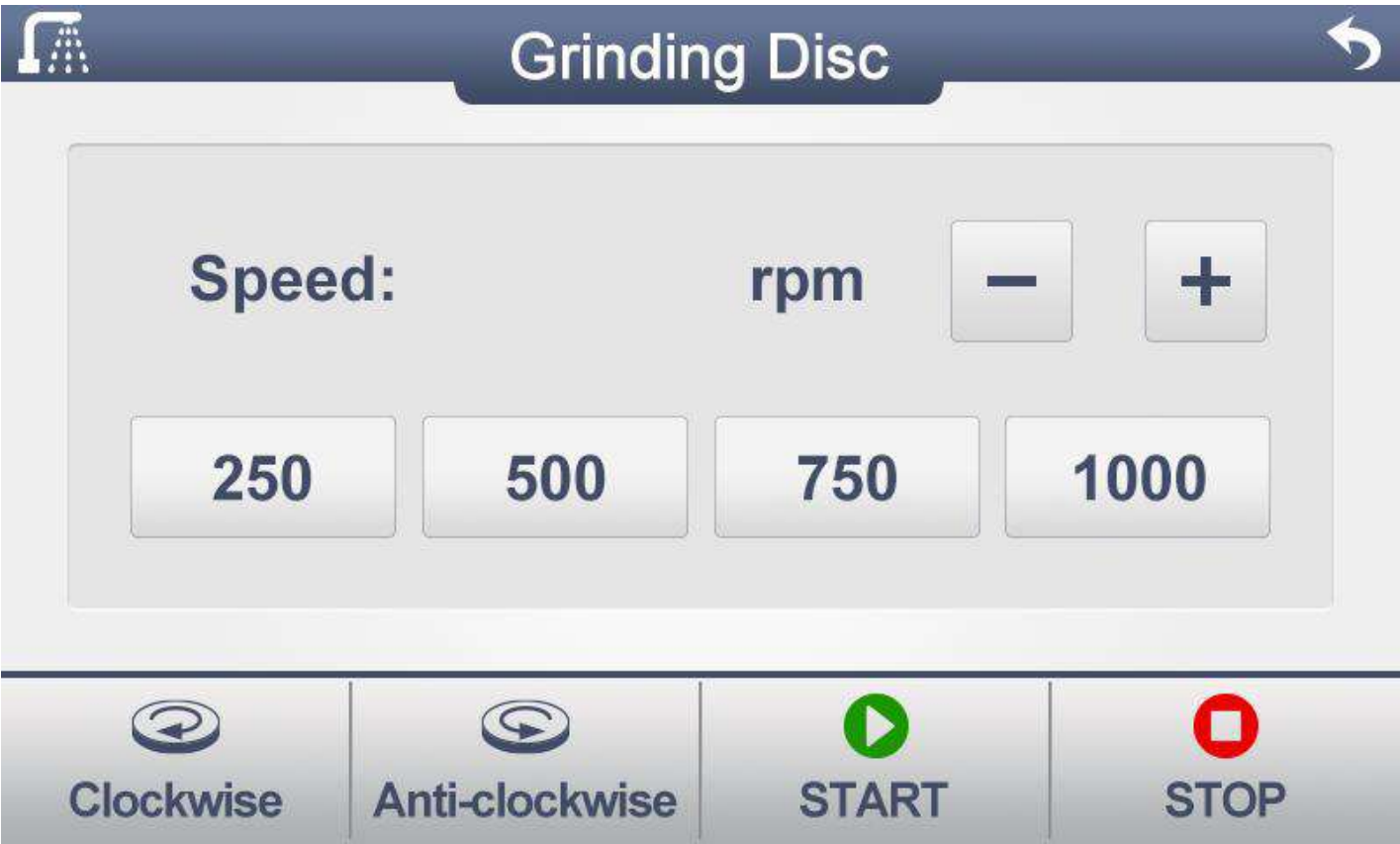


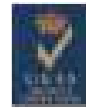
MPoli-2-250A/300 Twin Disc



User Friendly

MPoli-250A/300A provide touch screen operation for grinding and polishing , all regularly used functions are on the front screen without complicated menus, Store 10 parameters and recall with a single touch.

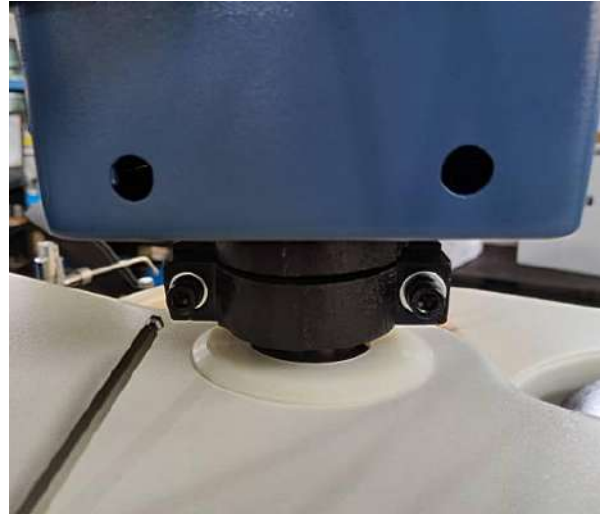




Easy Installing



Connect Touch Screen to Aviation Plug



Grinding Head Installation



Power Cables, Air Pipe,
Water Inlet/Outlet Connection



Magnetic Platen Disc Installation



Easy Installing



Put Teflon Pad on Magnetic Platen Disc



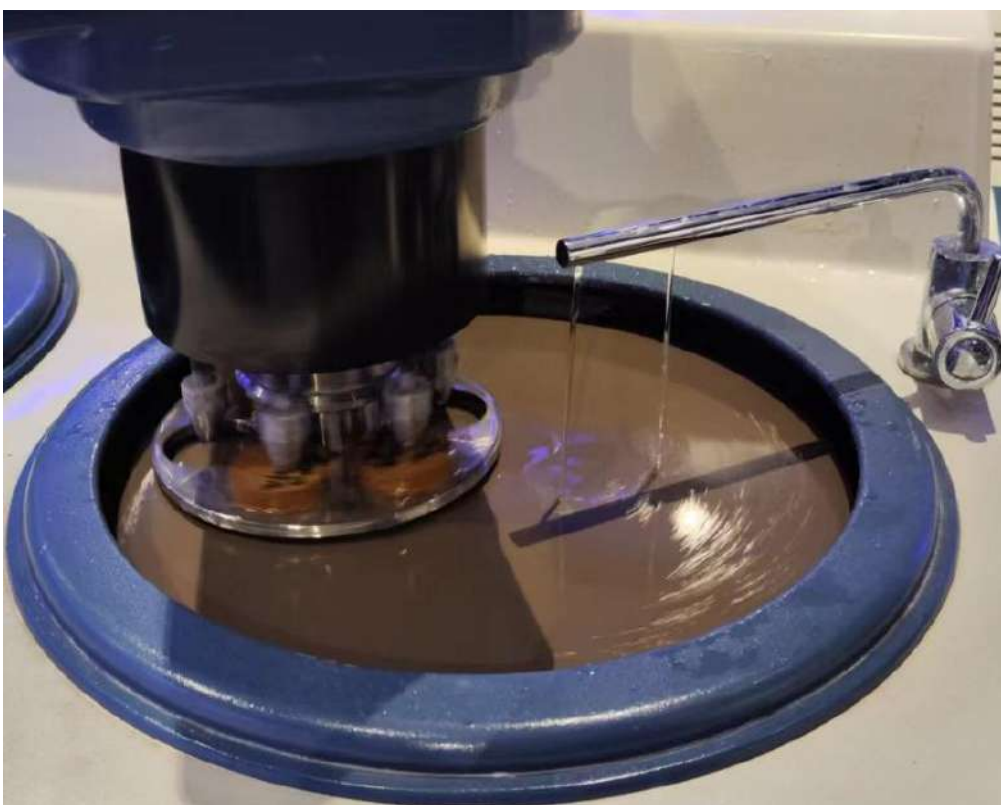
Sample Holder Installation



Sample Holder Disassembly

Rinse & Spin Function

A rinse and spin function included to prevent contamination between polishing steps, just one button touch , the rinse and spin function will turn on the water ,spin the platen at a user defined speed for a user defined time. The water is tuned off during the last seconds of the cycle to remove excess water in preparation for the next polishing step.



Easy to Move Platen

Deep clean more frequently and prevent cross contamination with easy to remove platen,- simply lift the platen to remove it from the machine without tools to access the bowl for cleaing .



Burst Dispensing(Optional)

MPoli-250A/300A can be connected to the burst dispensing system for increased through-put in the lab.

The burst will automatically dispense during the cycle allowing a user to operate other machine in the polishing process.





Ordering Information



MPoli-1-250A Auto Grinder Polisher
MPoli-1-300A Auto Grinder Polisher



MPoli-2-250A Auto Grinder Polisher
MPoli-2-300A Auto Grinder Polisher



Technical Specification

Model	MPoli-1-300A	MPoli-1-250A	MPoli-2-300A	MPoli-2-250A
Platen Diameter	300mm	250mm	300mm	250mm
Abrasive Paper Diameter	300mm	250mm	300mm	250mm
Platen Disc Type	Magnetic	Magnetic	Magnetic	Magnetic
Platen Disc Speed	Stepless 100~1000r/min			
Platen Disc Direction	Clockwise or Counter-Clockwise			
Platen Disc Motor	DC brushless motor, 220V, 1.2kW			
Head Motor	200W Stepper Motor			
Head Lock	Automatic			
Water Outlet	Automatic			
Head Disc Speed	Stepless 20~120r/min			
Timing Set	0~99min			
Program Storage	10 Saved Steps			
Sample Holder Qty.	6 pcs			
Sample Holder	Standard:Φ25mm, Φ30mm, Φ40mm (Choose one)			
	Customized different sizes and shapes			
Pressure Method	Single Pressure or Central Pressure			
Single Sample Force	0~50N			
Central Sample Force	0~160N			
Control Panel	7 inch Touch Screen			
Power Supply	220V, 50Hz, 8A		220V, 50Hz, 12A	
Machine Dimensions	800×800×760mm		1200×800×760mm	
Net Weight	96kg	96kg	134kg	134kg

Variable Sample Holders

Sample holders are designed to facilitate process automation and optimization. Many options for different sample sizes and shapes are available depending on the shapes , sizes, and capacities required. Customized plastic retaining rings for user to make different sizes .

Standard Single Force Sample Holders

Size	Style	Capacity	Additional Accessories
Φ25mm(Standard)	○	6	Plastic Retaining Rings
Φ30mm(Standard)	○	6	Plastic Retaining Rings
Φ40mm(Standard)	○	6	Plastic Retaining Rings



Standard Single Force Sample Holders



Holder with Plastic Retaining Rings

Standard Central Force Sample Holders

Size	Style	Capacity	Additional Accessories
Φ25mm(Standard)	○	6	Plastic Retaining Rings
Φ30mm(Standard)	○	6	Plastic Retaining Rings
Φ40mm(Standard)	○	6	Plastic Retaining Rings



Standard Central Force Sample Holder

Customized sample holders of different sample sizes and shapes





Standard Delivery

Name	Qty
Machine Mainframe	1 set
Grinding Head	1 pc
Single Force Sample Holder	1 pc
Sample Leveling Plate	1 pc
Grinding and Polishing Disc	1 pc
Magnetic Disc	1 pc
Teflon Pad	4 pcs
Abrasive Paper	6 pcs

Name	Qty
Polishing Cloth	2 pcs
Water Inlet Pipe	1 pc
Water Outlet Pipe	1 pc
Water Inlet Filter	1 pc
Air Pipe	1 pc
Head Connection Cable	2 pcs
Inner Hexagon Spanner	each 1 pc
Instruction Manual	1 copy



Optional Delivery

Name	Qty
Sample Holder	Φ25mm, Φ30mm, Φ40mm or customized
Plastic Retaining Rings	Φ25mm, Φ30mm, Φ40mm or customized
Teflon Pad	250mm,300mm
Abrasive Paper 250mm,300mm	180#, 240#, 280#, 320#, 400#, 600#, 800#, 1000#, 1200#, 1500#, 2000#
Adhesive Polishing Cloth 250mm,300mm	Canvas, Velvet, Woolen, Long Velvet
Diamond Grinding Paste	W0.5, W1, W2.5, W3.5, W5
Alumina Powder	W1, W3, W5
Chromium Oxide Powder	W1, W3, W5
Diamond Spray	W0.5, W1, W2.5, W3.5, W5
Diamond Suspension	W1, W2.5, W5
Automatic Dispensing Device	ZDD-1
Abrasive Paper Storage Rack	Ten layer shelf
Air Compressor	OTS550W-8L