

Mikrosize®

iStereo-211VT Stereo Microscope



Video



Contact us

Mikrosize Precision Instrument Co.,Ltd

A-4035 RuiFeng Business Expo, Wuhu City, China , 241000.

Web: www.mikrosize.com

Email: mikrosize@mikrosize.com



Web: www.mikrosize.uk

Email: mikrosize@mikrosize.com

Feature and Application

Product Feature

- Continuous zoom ratio 1:6.3.
- Anti static function: zoom lens tube, 10X eyepiece, auxiliary objective lens, it is very useful when observing samples that require anti-static (such as semiconductor chips), if this function is used, the microscope can be grounded through the ground socket behind the stand).
- Sealing function: zoom lens tube and 10X eyepiece, making it convenient to use the microscope in environments with high humidity such as oil vapor and water vapor.
- Ergonomic design ensures longer and more comfortable operation for operators.
- High definition, large viewfield, long working distance, various magnification and accessories for choose.



Product Applications

- Training and education in natural sciences provided by schools and research institutes.
- Daily inspections in medical institutions, research in biology and electronic engineering.
- Industrial assembly, testing, measurement, and quality control, especially IT industry inspection.



Product Details



1.Eyepiece

2.Zoom Lens Tube

3.Screw For Fasten Zoom Lens Tube

4.Mechanical Stage

5.Screw For Fasten Mechanical Stag

6.CCD Camera

7.Adapter

8.Zoom knob

Product Details



1.Mainframe

2.Led Illumination

3.Focus Knob

4.Fixed Clamp

5.Epi-Illumination Knob

6. Switch

7.Transmitted Illumination Knob

Product Details

Product Structure



- Eyepiece: adjustable interpupillary range 52-75mm; adjustable diopter, large view-field high eyepoint, inclined 45°, ergonomically designed.

- Knob Adjustment: Convenient operation, no need to change objective lens; continuous zoom, accurately observation.



Continuous polyloid (0.8X-5X)



- Bilateral focusing: Comfortable and convenient operation, users can choose to operate the focusing handwheel close to themselves. Accurate focusing helps to adjust the focal length more precisely. The setting of the bilateral focusing handwheel allows users to more finely control the degree of focusing, ensuring clear images are obtained.

Product Details

LED Illumination



Epi-illumination



Transmitted illumination

- Long lifespan: LED illumination typically have a lifespan of tens of thousands of hours, making them more durable compared to traditional light sources.
- Brightness adjustment: The brightness can be adjusted according to the needs to achieve the best observation brightness.
- Color temperature stability: When adjusting brightness, the color temperature can still remain unchanged, ensuring consistency in observation results.

10X Adjustable Diopter Eyepiece



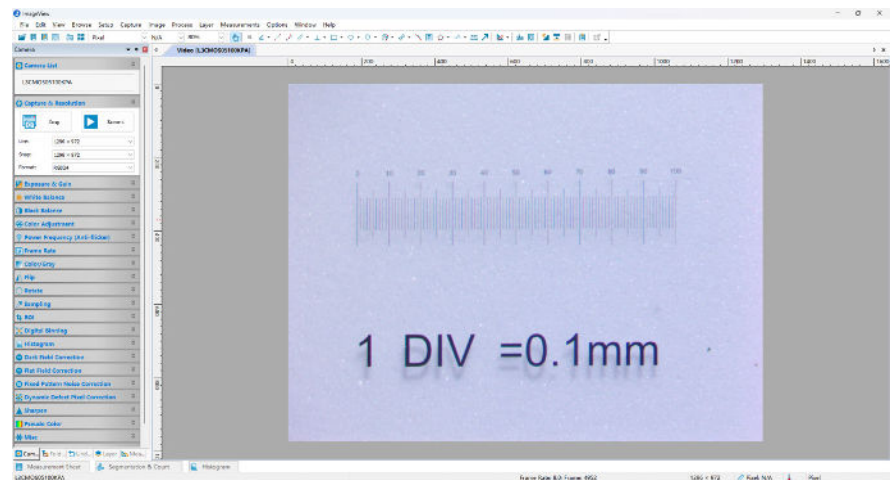
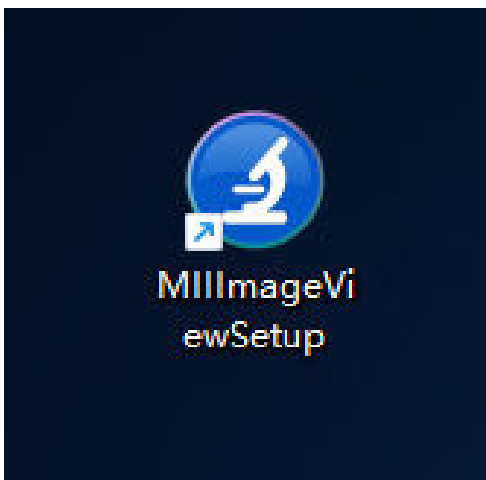
- Satisfied different visual requirements, improve observation effect and quality, enhance flexibility and convenience of use; helps users observe and analyze samples more accurately.

Software Operation Interface

Using software



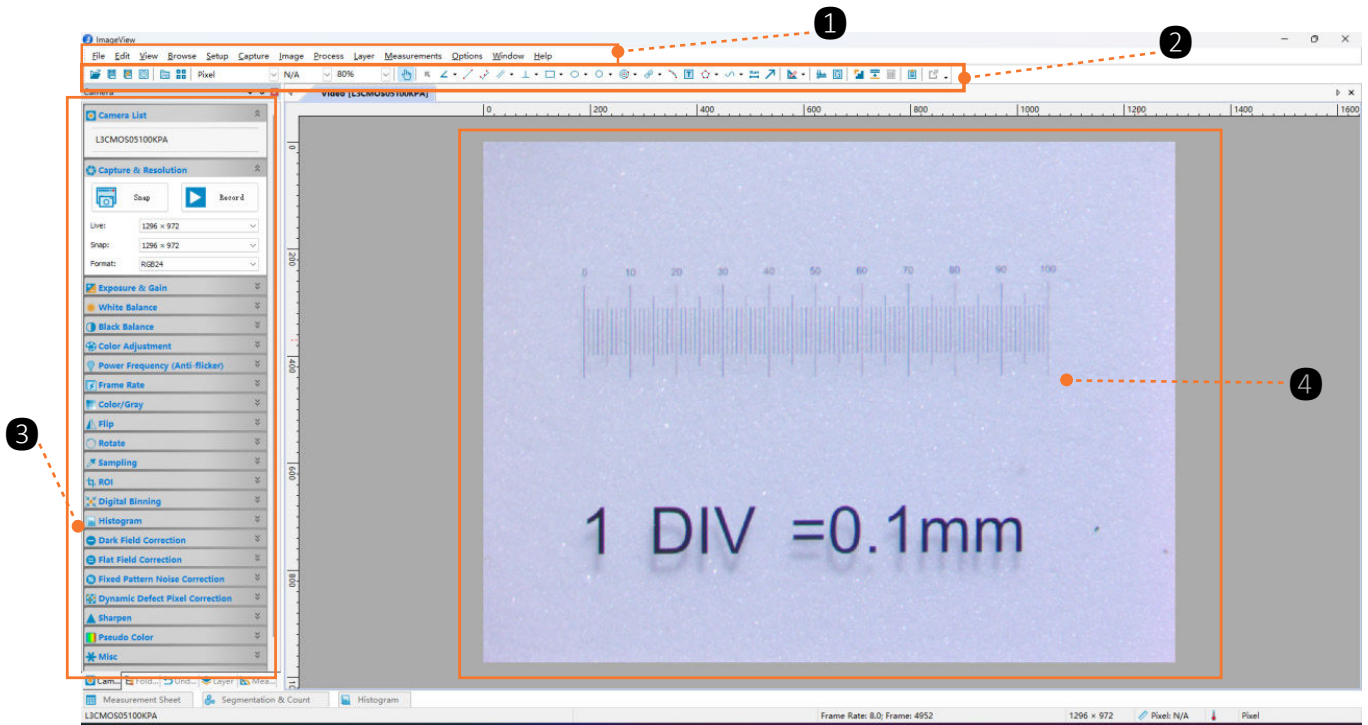
- This model can equip with CCD camera to connect PC software, which can realize high-quality image acquisition, real time display and dynamic observation, rich image processing functions;also can realize simple 2D measurement function, measure the size of objects in images (length, width, diameter, area, angle).



- The main functions of the software used include basic functions such as image acquisition and display, measurement annotation, image processing, 3D reconstruction and analysis, data statistics and analysis, as well as specific functions such as multi-channel analysis for color or fluorescence images.
- Some software also has extension functions such as extended focus and extended exposure; the ability to generate Word reports and print them.

Software Operation Interface

Using software



Main software layout:

1. Menu Area

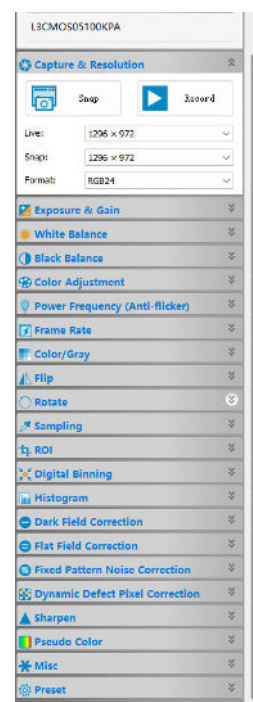
2. Tool Area

3. Adjustment Zone

4. Image Area

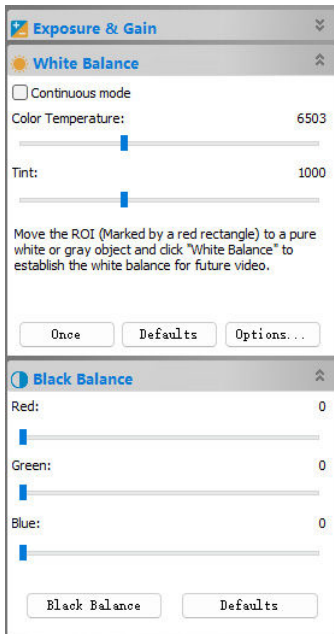
Description

- The camera sidebar is mainly used to control the camera parameters of manufacturers.
- The camera sidebar has various combinations depending on the camera, and each group can be unfolded or collapsed by clicking the group name or the down (up) arrow to the right of the group name. A typical camera sidebar is shown in the left figure;



Software Operation Interface

White Balance

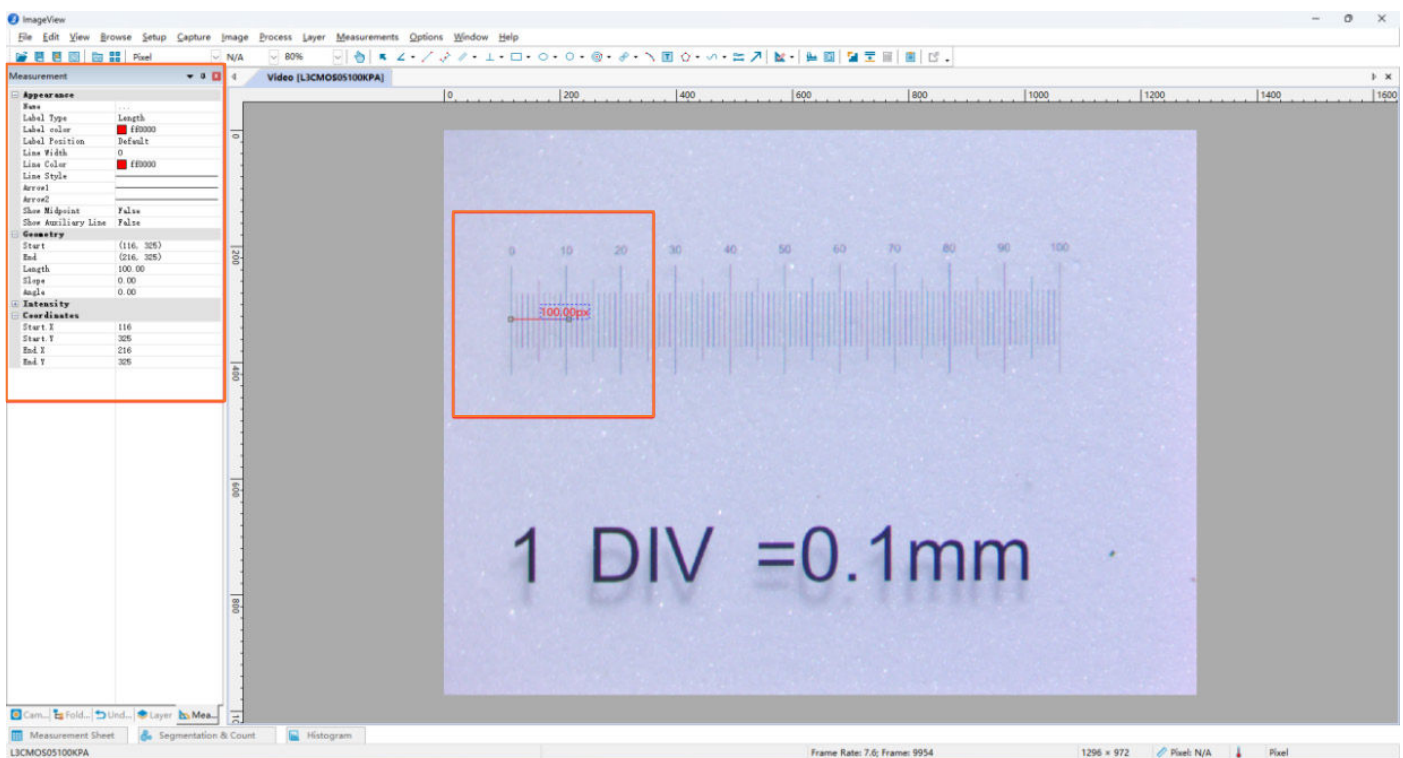


- Accurate color reproduction ensures that the true color of the tested object can be restored under different lighting conditions

Black Balance

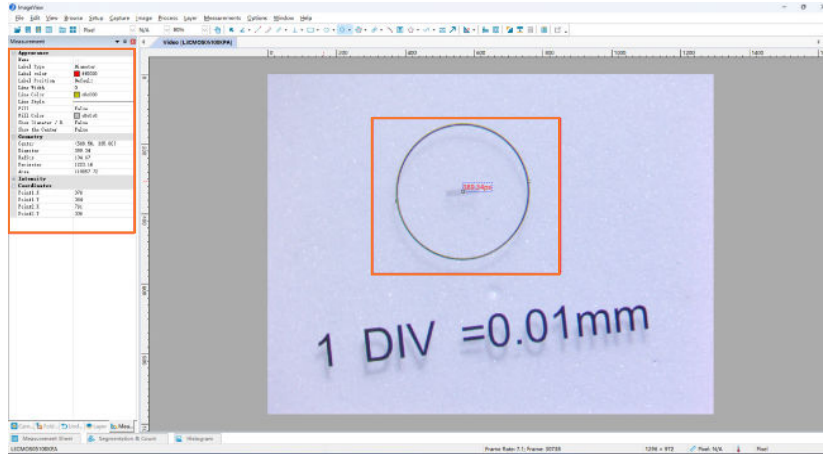
- Remove noise and interference
- Enhance contrast

Multiple Measurement Tools



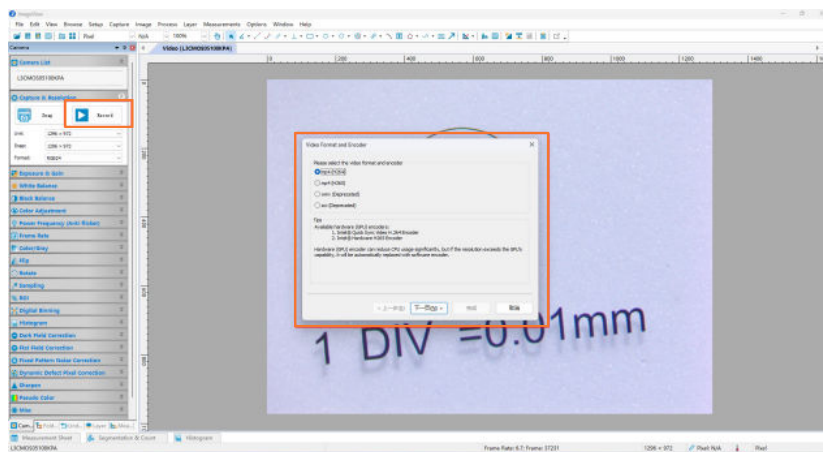
Software Operation Interface

Multiple Measurement Tools



- Provides measurement tools such as lines, circles, ellipses, rectangles, polygons, angles, which can accurately measure geometric parameters such as length, area, angle, diameter, etc. of objects.
- For example, in materials science, the size of materials and particles can be accurately measured; In biology, it can measure the size of cells, the diameter of cell nuclei.

Annotation Function





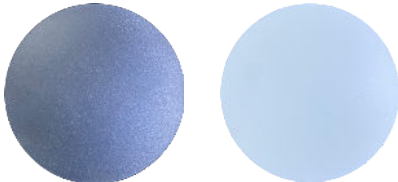
- It can directly annotate images, such as adding text explanations, arrows pointing to specific parts, etc., highlighting important information, making measurement results and image features more intuitive and easy to understand, and facilitating subsequent analysis and report generation.
- The software has capture and recording functions, recording mp4 (H264)/mp4 (H265)/wmv/avi
- Record setting time is 1-86400s.

Technical Specification




*Abbreviation: Viewfield (Eyepiece + Auxiliary objective lens + Polyploid body)

Auxiliary Objective Lens		/	0.5X	2X	
Eyepiece	WD (mm)		115	211	43.5
	10X Φ22	Magnification	8-50X	4-25X	16-100X
		Viewfield (mm)	Φ27.5-4.4	Φ55-8.8	Φ13.8-2.2
	15X Φ16	Magnification	12-75X	6-38.5X	24-150X
		Viewfield (mm)	Φ20-3.2	Φ40-6.4	Φ10-1.6
	20X Φ12.5	Magnification	16-100X	8-50X	32-200X
		Viewfield (mm)	Φ15.6-2.5	Φ31-2.5	Φ7.8-1.3
	30X Φ7	Magnification	24-150X	12-75X	48-300X
		Viewfield (mm)	Φ8.8-1.4	Φ17.6-2.8	Φ4.4-0.7

Standard Delivery

Name	Qty	Photo
10X Eyepiece	2pcs	
Glass Plate	1pc	
Black and White Board	each 1pc	
Zoom Lens Tube	1set	/
Transmission Rack	1set	/
Mainframe	1pc	

Optional Delivery

Optional	15X Eyepiece	
	20X Eyepiece	
	0.5X Auxiliary objective lens	
	2X Auxiliary objective lens	
	LED Circular illumination	
	Oblique illumination (LED)	
	10X Dividing eyepiece	
	Micrometer	
	Adapter+CCD	
	Universal bracket stand	

Mikrosize Precision Instrument Co.,Ltd

Add: A-4035 RuiFeng Business Expo , Wuhu City, China , 241000.

Tel: 0553-2836939 Fax:0553-2836938 Web: www.mikrosize.com

Mikrosize®

SINCE 2009

Professional Brand
Manufacturer

MEASURING & TESTING

